

# COLLEGE PROSPECTUS 2018



The Lowanna College community is committed to high expectations and believes students will achieve excellence in their endeavours.



# About Us

## Our Vision

*The Lowanna College community is committed to high expectations and believes students will achieve excellence in their endeavours.*

### Principal's Welcome

I would like to take this opportunity to welcome you to the Lowanna College community. Lowanna has a long history and began as an amalgamation of three schools, Moe High School, Newborough High School and Yallourn Technical School.

Today, Lowanna is a vibrant and well-resourced Victorian Government 7-12 Secondary College with a student population of around one thousand. Our College is situated in a large and attractive setting adjacent to bushland and the Moe-Yallourn Rail Trail in the township of Newborough. It has three mini schools – Junior School (years 7 and 8), Middle School (years 9 and 10) and Senior School (years 11 and 12), each responsible for 300-400 students.

In 2017 the College will enter into a new 4 year Strategic Plan that will focus on the following:

- Improving student outcomes in numeracy and literacy and VCE results.
- Building authentic relationships and a belief in our students and families.
- Improving the leadership capacity of our staff.
- Improving the instructional knowledge of our teachers.

Our ultimate goal is to develop Lowanna College as the best school in the area and to provide all students with the opportunity to fulfil their ambitions.

It is our belief that the development of the whole child is paramount and we have a welfare system that has been recognised and celebrated widely for assisting disengaged students. We genuinely care about every student and our student management processes, welfare support and behaviour norms (based on the core value of mutual respect), ensure that all students are supported.

Your child can expect a wide and varied curriculum, access to a vast array of extra-curricular activities, a caring environment and a belief that they will achieve excellence in all of their endeavours.

Again I take great pleasure in welcoming you to Lowanna College and know that your child will receive an excellent education.

Yours sincerely,



Brett Windsor  
Principal



### Table of Contents

Curriculum .....	2
Communication .....	3
News Bulletin .....	3
Compass School Manager .....	3
Student Support .....	4
Facilities.....	6
College Uniform.....	8
Sports Excellence Program.....	9

Curriculum Programs .....	10
Junior School Program .....	10
Middle School Program.....	11
VCE & VCAL .....	12
VET in Schools.....	12
Extra-curricular Programs .....	13
Curriculum Support & Enrichment Programs .....	16

*This publication was correct at the time of printing and is subject to change. April 2017.*



# Curriculum

The College, in cooperation with local primary schools, tests the Literacy and Numeracy skills of incoming students. These tests are used to identify students with learning difficulties and also high achievers. Programs have been designed to provide for students at both ends of the learning spectrum as well as those achieving as expected.

Lowanna places a great deal of emphasis on catering for students of all ability levels. The structure of the timetable, the subjects offered and the wide range of extra-curricular activities provide students with a stimulating and enriching experience at the College.

Along with the core subject areas, a wide range of quality options are offered that set the College apart from other schools in the area.

At Years 7 & 8 each Learning Area is a compulsory part of the curriculum.

The study of Languages is compulsory at Year 7 and 8 and it is offered as an elective from Year 9 to Year 12. Sport is compulsory and a range of sports is on offer each term.

At Years 9 & 10 all Learning Areas continue to be compulsory but within a unit structure where broad student choice is provided. The curriculum is divided into a set number of units to be completed over two years. Each Learning Area is represented in this system.

At Years 11 & 12 students are able to complete the Victorian Certificate of Education (VCE) or the Victorian Certificate of Applied Learning (VCAL). Students can choose from a comprehensive range of subjects and are also able to select from a number of Vocational Education & Training (VET) certificates. The College has close links with several TAFE Colleges and ongoing agreements with Monash and Federation University.

Students are mentored in the development of their own individual pathway preparation for post-secondary education.

Year 7 features combined classes which allows for a variety of learning experiences using and sharing information and resources. It provides easy access to student support services and presents opportunities to participate in a variety of activities.

At the Year 8 level we also provide students with the opportunity to vary their learning experiences. The Year 8 building has enabled us to exercise more flexibility in providing a program that meets the needs of all students supported by state of the art ICT infrastructure.

Specialist programs in Music, the Arts, Science, Physical Education, Technology and Food are all key components of the learning program that many students look forward to when they come to secondary school.

Lowanna College has a very close working relationship with local government primary schools and hold regular network meetings to discuss issues involving curriculum and transition of students from Grade 6 to Year 7.

Lowanna is proud of its comprehensive transition program for Grade 6 students and looks forward to building on this success to provide a consistent, quality education for all students now and into the future.





# Communication

## News Bulletin

The "New Bulletin" is published electronically and it is produced to keep students and parents informed of all events taking place within the College. Current and back issues of the bulletin can be found on the College website: [www.lowanna.vic.edu.au](http://www.lowanna.vic.edu.au). Alternatively, hard copies can be collected from the front office.



## Attendance

It is considered important that students are fully engaged in their educational pursuits and therefore attendance is a high priority.

Each of the mini schools has an Administrative Assistant who manages attendance records and informs the coordination team of any attendance issues. Parents have access to their child's academic and attendance records, online via the Compass Parent Portal. Coordinators are available to discuss a student's attendance at the parent's request.

Parents are clearly notified through the website, Facebook page and News Bulletins of any Student Free Days. Students are required at school on all other occasions. When an absence does occur parents are required to notify the school either during or immediately after the absence.

At Lowanna College, we recognise that parents are busy and often don't have the time to come in to the school during the day. We have chosen to adopt the most efficient form of communication between school and home by introducing a community online portal called 'Compass'.

Compass has become the primary means of communication between the school and home.

We do however understand that not all parents have access to the technology required to make use of the Parent Portal. We therefore encourage any family in this position to contact us to make alternative arrangements to supply hard copies of reports and news bulletins.

Parents are able to login to Compass via the 'Community Portal' button located on the school website ([www.lowanna.vic.edu.au](http://www.lowanna.vic.edu.au)) or via this URL address <http://lowanna.vic.jdlf.com.au>

Each family listed in the school administration database has a unique login for Compass, which you will receive upon enrolment and can use immediately.

The features of Compass are detailed below:

1. **Email address and mobile phone number** - update your details through the portal. The details listed will be used to send emails and SMS alerts.
2. **Electronic News feed** – the school will post (electronically) news to parents to inform of upcoming events and activities at the school. Your news feed will be customised, showing only the information relevant to you and your children.
3. **Attendance** - view your child's attendance online, approve absences, and indicate a future absence.
4. **Reports** – GPAs and end of semester reports are available on Compass for you to view, download and/or print. The College no longer prints school reports, however a printed copy can be made available upon request.
5. **News Bulletin** – the news bulletin is emailed to parents via Compass each month.
6. **Teacher email** – parents can email their child's teachers directly.
7. **Parent Payments** - pay for school fees or excursions electronically, saving you a visit in person.

Compass provides the school community with a range of facilities, which streamlines communication and provide enhanced access to information.

It is important that parents log in at least once a fortnight to access the news bulletin and the news feed. It is also essential that the Username and Password is kept in a safe place, and not made available to students.

If you require assistance using Compass please contact the College where a staff member will be happy to help you.

**COMPASS**  
School Manager

**Lowanna College**

Username:

Password:

[Don't know your username?  
Forgotten your password?](#)

# Student Support

*The College places a high priority on student welfare. Alternative programs using community resources operate at Year 7 & 8 to assist students at educational risk.*

## Growth Mindset

Lowanna College is committed to high expectations, an element of this is the establishment of a culture of Growth Mindsets. We believe that all students are able to learn and reach their full potential. Staff are trained in the language of mindset, they encourage students to continually apply themselves through effort and persistence in order to see feedback as an opportunity to learn and develop their skills. At Lowanna College we are trained to recognise the fixed mindsets of students and challenge those who do not try and do not believe in themselves.

## Student Management & Welfare

Student Management at Lowanna College centres on each students mini school. We have three Mini Schools:

Junior	-	Years 7 & 8
Middle	-	Years 9 & 10
Senior	-	Years 11 & 12

The mini schools are led by an Assistant Principal, Mini School Manager, and a team of coordinators who have the responsibility for the management and welfare of the students.

Communication between school and home is vital to student success and well-being. The College can only act on a concern if we are made aware of it. Please feel free to contact the relevant mini school with any issues regarding such things as your child's progress, discipline, health and welfare. Each mini school has an Administration Assistant, who will assist in organising these contact.

## Adolescent Health Nurse

As part of a state-wide program the College has the services of a part-time qualified nurse who provides health education for the school community. The school nurse is an important member of the welfare team.

## First Aid

The College has a trained First Aid Officer and many trained staff to deal with ill or injured students and to dispense prescribed medications.

The College has a number of procedures to follow in the event of student injury. These may include first aid provided by the First Aid Officer, contact to parents, or other emergency contacts and, if necessary, calling an ambulance.

## Koori Education Centre

We have a full program of support for our indigenous students and their families. A Koori educator works with these students to assist with their attendance at school. We also offer Koori tutoring for our students as a means of supporting their success. The College provides a Woolartbe room to students of indigenous heritage where they are able to access resources for their schooling.

## Student Welfare Coordinator

Lowanna College has identified student welfare and management as a major priority. The College employs a full time Welfare Coordinator and a full time Welfare Assistant who provide a confidential service to all students and parents. The Student Welfare Coordinator is responsible for helping students manage issues such as truancy, disengagement, bullying, drug use and social/emotional health.

The Student Welfare Coordinator works out of the 'House' a stand-alone facility which can also be accessed by outside agencies. The 'House' is located near the Junior School and provides time and space for many students requiring additional support.

The Welfare Team works alongside other welfare professionals and agencies to address student needs. The College also has access to District Support Staff of the Department of Education. When a need arises, the College employs other agencies to run programs to cater for the specific needs of students.

A large number of parents and students have used, and continue to access, this service.

## College Chaplain

The Chaplain aims to encourage, equip and empower students in areas such as resilience, reconciliation, and personal growth.

The College Chaplain:

- is available for confidential pastoral care to all members of the school community
- is involved in school processes relating to crisis intervention and trauma debriefing
- offers an active and distinctive role in the student wellbeing team, providing input where appropriate to school processes and policies.
- offers a spiritual dimension

Although pastoral care and education occupy most of a chaplain's time they are also actively involved in the general life of the school.

## Chaplaincy Committee

The Chaplaincy Committee exists to support the employment of a Chaplain in the College. The Committee meets on the first Wednesday of each month at 4pm to oversee the Chaplaincy program in association with ACCESS Ministries. The Committee would welcome new members from the Parent body or assistance with fundraising activities.

## Educational Support

Lowanna College strives to provide an inclusive educational opportunity for all students. The hub of special programs is within the Language Centre, which provides both small group working spaces as well as larger class areas for these students. The Program for Students with Disabilities (PSD) is based here with access to aide time, special education consultation and planning. Other programs include Literacy Support, English as an Additional Language and specialised group work. Students always feel welcome and comfortable knowing that support and understanding is available to help them manage in such a large school. Parents can easily contact the Centre by phone to speak to the coordinator regarding any of the following -

- Programs for Students with Disability (PSD/integration) support and staff
- Special needs resources
- Literacy Support programs for students with language disorders or literacy difficulties
- Access to computers
- Support groups
- Educational testing and screening for groups or individuals
- Time out support for student behavioural management
- Individually programmed sessions for students with Individual Learning Plans
- Access to consultation with District Staff psychologist, speech pathologist and special education services
- Effective linking with the school welfare structure, including counselling.
- Direct access to Special Education teacher at parent request
- A safe, structured environment to assist in strengthening students' sense of belonging.

## Individual Pathways Planning

The Managed Individual Pathways (MIPs) initiative ensures that all students 15 years and over are provided with individual pathway plans with associated support as a means to continuing education, training or full-time employment.

MIPs aims to help young people:

- make a smooth transition from compulsory schooling to further education, training and employment
- develop skills to manage their pathways throughout their working lives
- develop their knowledge, understanding and experience of opportunities in education, training and employment

Lowanna employs a Careers Adviser who provides additional support to students at risk of disengaging or not making a successful transition to further education, training, or secure employment.

## Conveyance Allowance

Students who live more than 4.8km from the College and who are unable to access free school buses may be eligible for a conveyance allowance. A bus coordinator is available at the College to discuss any issues that may arise.

## Responsibilities of Students

At Lowanna, students are encouraged to pursue excellence within a caring environment by:

- Demonstrating a consistent commitment to improving skills and knowledge.
- Accepting responsibility for their actions and developing self-discipline.
- Treating others with respect and good manners.
- Treating personal property and the property of others with respect.
- Respecting the right of others to learn and the right of teachers to teach, with the understanding that all students should have access to interesting, enjoyable and successful educational experiences.

## School Injuries & Insurance

The Department does not provide personal accident insurance or ambulance cover for students. Parents and guardians of students, who do not have student accident insurance/ambulance cover, are responsible for paying the cost of medical treatment for injured students, including the cost of ambulance attendance/transport and any other transport costs.

It is recommended that parents/guardians wanting their child to be insured should seek assistance in obtaining student accident insurance with their insurance broker or find a suitable personal accident insurer.

Personal property is often brought to school by students, staff and visitors. This can include electronic devices (including mobile phones and laptops) calculators, toys, sporting equipment and cars parked on school premises. The Department does not hold insurance for personal property brought to school and has no capacity to pay for any loss or damage to such property. Staff, students and visitors are discouraged from bringing any unnecessary or particularly valuable items to school.

## Parental Involvement in the School

Parent participation in the life of the College is openly encouraged and various opportunities exist informally or through association with the Parents' Club, Chaplaincy Committee or College Council

The Lowanna College Council meets monthly. Parent representatives are elected every year on a 2 year appointment basis. Nominations for these positions are called for in March each year. Parents are encouraged to consider nominating if their interest lies in this area of participation in the school community.

The Lowanna College Parents' Club meets each month in the College Conference Room. At these meetings the College Principal or a nominated Assistant Principal is available to answer any questions.

Highlights of some of the things in which the Parents' Club provide support and assistance to the College include: Junior School Barbeque, Grade 5/6 Transition Week, Presentation Evenings, School Musical, Debutante Balls, and fund-raising.

Many College events rely heavily on assistance from volunteers. Your participation as a parent/friend at these events ensures their success.



# Facilities

## Language Centre

Lowanna College has a state of the art Language Centre. This centre accommodates the Language department as well as the Literacy and English as an Additional Language (EAL) programs.

## Library Resource Centre

The Lowanna library holds a wide range of learning resources which includes multi-media as well as books. Automated search terminals & loan system allow students and staff to have fast and easy access to resources. There are two class areas with computer facilities to allow research to be undertaken. As well as study resources, there is an extensive fiction and magazine collection to cater for recreational readers and many board games to encourage social interaction between students. The Library is open before, during and after school and at both recess and lunchtime to allow staff and students ample opportunity to use and borrow resources.

The Library also hosts the 'Homework Club' every Monday from 3.00pm - 4.30pm which is staffed by a group of volunteer teachers. It is a great opportunity for students to form study groups and receive extra assistance outside normal scheduled classes.

## Career Resource Centre

The Career Resource Centre provides comprehensive resources and services for our students to assist with their post school preparation. Some of the services offered include: course and career guidance, pathways planning, job interview preparation and work experience/work placement. For senior students there is a vast array of information on University and TAFE courses, scholarships and student services.

The centre is open throughout the day and most recess and lunch times.

Students are encouraged to participate in the many career related excursions and events that are organised throughout the year.

## Information and Communication Technologies

Lowanna College places high priority on Information Technology and the use of Learning Technologies in all Learning Areas. The College now has the largest, business-grade, single-site network in our region.

The enhanced network and the Laptop/device program has revolutionised the way the school communicates, collaborates, co-operates, and creates.

## Canteen

The College hosts a canteen which provides a wide range of hot and cold food. This operated at recess and lunchtime.

## Lockers

All students are provided with a locker and a combination lock.

## Gymnasium & Auditorium

A 580 seat auditorium supports a strong Performing Arts program and a double gymnasium with sprung floor enhances the exemplary Physical Education and Sports program.

These facilities not only benefit Lowanna students but are made available for hire to the wider community.

## Fitness Gym

The College has a fully equipped gym with a range of cardio equipment, machine weights and free weights.

Gym programs are incorporated into curriculum and are also offered at lunchtimes and after school for students.

## Outdoor Sporting Facilities

The College has a football oval, soccer pitch, basketball, and netball courts all on-site.

In addition to this, Lowanna is located within close proximity to the Latrobe Leisure Centre and Newborough Recreation Reserve where facilities include a heated indoor swimming pool, and track and field facilities.

## Horticultural Area and Mini Farm

A horticultural area and mini farm have been established at the College. The area is used by the Science Department and other groups within the College.

## College Farm

The College Farm is situated close to the College and is used for Agricultural and Horticultural Studies at Middle School and by Junior Science classes.







# College Uniform



The wearing of school uniform develops pride, a sense of belonging and identification. The Lowanna College Council has therefore adopted a compulsory student dress code within Department of Education guidelines. The original uniform was designed by a group of parents and students when the College was formed. Variations have been introduced since then, including the girl's summer dress and winter skirt. The guiding principles were practicality, availability, affordability, choice and non-competitiveness, with a clear College identity. The uniform policy is reviewed and ratified by College Council on a regular basis.



All students are required to be in full school uniform at all times, including travelling to and from school, and excursions. Students will be made aware of exceptions such as Sport/PE and other occasional activities.

On the rare occasion a student needs to be out of uniform, a note of explanation is required.

Noncompliance with the uniform policy will be treated as a breach of the College Code of Conduct and penalties will apply including detentions and exclusion from socials and other extra-curricular activities.

All clothing should be clearly marked with the owner's name. There is a lost property cupboard located in the First Aid area for items that may have been misplaced.

A list of the current uniform items will be provided with the enrolment package.

The uniform is available from:

Beleza School Uniforms  
Shop 26B George Street  
Moe

Secondhand uniform items are also available online via the Lowanna College Secondhand Books and Uniform Facebook group.



# Sports Excellence Program

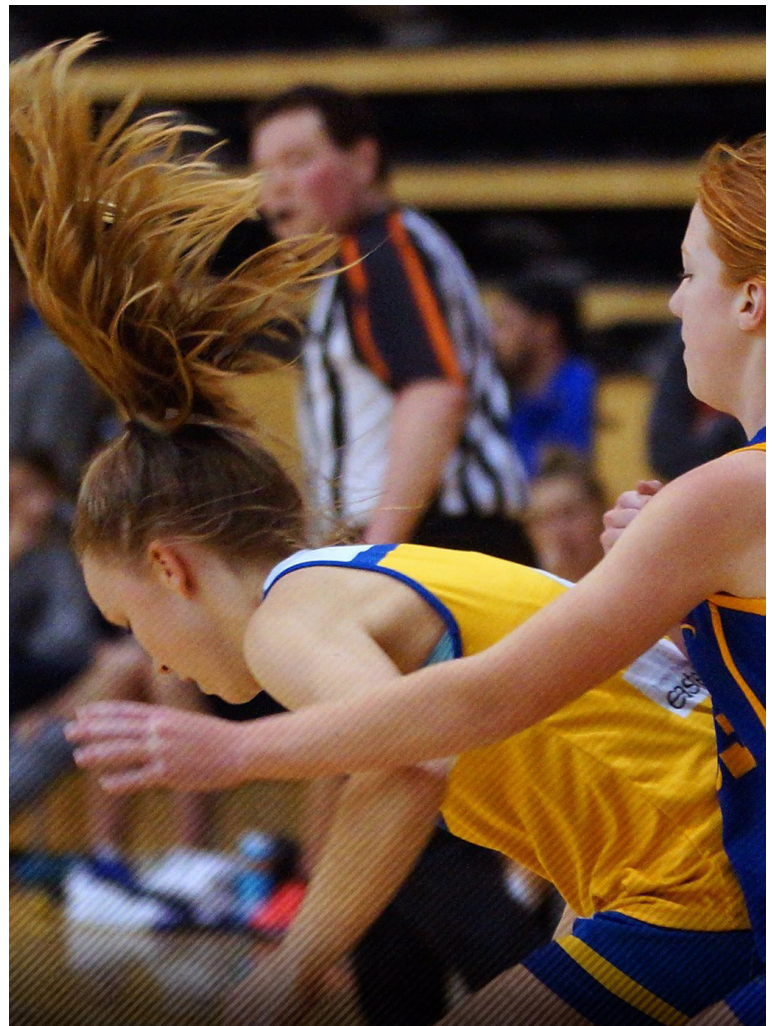


The Lowanna Sports Excellence Program (SEP) is committed to providing students with the highest quality specialised sports program including high quality coaching with supreme facilities and equipment available. As the only school-based sporting and academic development program in Gippsland, we are offering students elite coaching and training during school hours while delivering a complete secondary school curriculum. Lowanna has partnerships with Gippsland Power (Football) and Latrobe City Energy (Basketball), which ensures a quality program is delivered and provides additional resources for the program. These partnerships complement our program whilst improving sporting pathways for talented student athletes.

The 2017 curriculum included;

- Visiting an AFL/NBL club
- Special guest training sessions
- P3 sports and recovery
- Completing an AFL umpire or referee course (Year 9)
- Units 1 & 2 VET Sport & Recreations (Year 10)
- Fitness and conditioning sessions, run by Exercise Physiologist, Josh Whittaker
- Participating in all SSU sporting competitions and the Helloworld National Schools Basketball Championships.

As part of the Sports Excellence Program, students are expected to maintain their Grade Point Average (GPA) and academic results.



# Curriculum Programs

## Junior School Program

The Junior School program is based on a solid core of Literacy and Numeracy. This core is complemented by a diverse range of specialist subjects that only a well resourced school such as Lowanna can provide. This presents students with the opportunity to experience a range of curriculum that broadens their awareness and allows them to make better informed choices for their possible future pathways. The timetable is organised into 20 sessions per week, each of 72 minutes duration.

### Year 7

Key Learning Areas	Subject
Arts	Visual & Performing
English	English
Health & Physical Education	Physical Education, Sport
Mathematics	Mathematics
Science	Science
Technology	Food, Materials, Digital Technologies & Systems
Humanities	Humanities
Languages	Italian or Indonesian
Pastoral	

### Year 8

Key Learning Areas	Subject
Arts	Visual & Performing
English	English
Health & Physical Education	Physical Education Sport
Mathematics	Mathematics
Science	Science
Technology	Systems Technology, Technology & Food
Humanities	Humanities
Languages	Italian or Indonesian

## Middle School Program

Middle School not only represents a change of location for students, but the program offered reflects the fact that students are now older and are ready to explore different options. Year 9 & 10 students are moving towards a time where they are beginning to plan for their futures. The level of work is increased, and students need to accept that homework and study at home will increase, to enable them to keep up with the work requirements for each subject. At Year 10, students can apply to undertake a VCE subject, whilst all students complete a unit of Work Education.

In the Middle School, there are some compulsory areas of study, but a broader choice is available. Essentially, students are still undertaking a general education. Students will be in classes which include other students who have selected that particular unit of study. Students study 6 units each semester and each class will be made up of different students according to subject selection.

In 2017, Lowanna College is also offering a Pre-Cal course. This is modelled on the Senior School VCAL Program which involves three days of school, one day work placement and one day of an alternative program.

Students interested in this option will need to apply and go through a selection process to participate in this program.

## Year 9 Program

Key Learning Areas	Compulsory Subject	Elective Subject
English	One of: General English; English Plus	
Mathematics	One of: Foundation Mathematics; General Mathematics; Advanced General Mathematics; Mathematical Methods	
Science	General Science	Forensic Science; Introduction to Psychology
Humanities	Humanities (History/Geography)	History's Mysteries; Death, Doom & Destruction; You & Your Money;
Health & Physical Education	Physical Education & Health	Competitive Boys Team Sports; Competitive Girls Team Sports; Fitness and Conditioning, Outdoor and Environmental Education.
Visual & Performing Arts	One of: Painting & Drawing; Photography; Ceramics; Print making; Sculpture; Art Express; Visual Communication & Design; Music Performance: Putting on a Show, Making Music using Software,	
Technology	One of: Food Studies, Food & Health, Intermediate CO <sub>2</sub> Vehicles; Electronics; Girls Creative Wood; Beginning Wood; Intermediate Wood; Beginning Metal; Intermediate Metal; Coding and Gaming, Digital Technologies	
Languages		Italian; Indonesian; Introduction to Chinese

## Year 10 Program

Key Learning Areas	Compulsory Subject	Elective Subject
English	One of: Pre-Cal English, General English, English Plus	
Mathematics	One of: Foundation Mathematics; General Mathematics; Advanced General Mathematics; Mathematical Methods	
Science	General Science	Farm Studies; Serious About Science
Humanities	Humanities (History/Geography); Humanities (Work Education)	Small Business Accounting & Management
Health & Physical Education	One of: Physical Education & Health; Physical Education; Health Education	Competitive Boys Team Sports; Competitive Girls Team Sports; Fitness & Conditioning; Outdoor and Environmental Education
Visual & Performing Arts	Choice of: Creative Drama; Painting & Drawing; Photography; Advanced Photography; Sculptural Ceramics; Visual Communication & Design; Art Methods; Art Express Digital Photography; Art Architecture; Music Performance: Putting on a Show; Making Music using Software	
Technology	Choice of: Food Studies, Food Safari; Intermediate CO <sub>2</sub> Vehicles; Electronics; Fishing Rod Making; Girls Creative Wood; Beginning Wood; Intermediate Wood; Beginning Metal; Advanced Metal; Coding & Gaming; Digital Technologies, Furniture Making; Advanced Furniture Making.	
Languages		Italian; Indonesian; Introduction to Chinese



## Senior School Program

### VCE

An extensive range of studies is offered at the VCE and VCAL level. Units 1, 2, 3 & 4 are time-tabled for 9 sessions per 3 weeks

Key Learning Areas	Year 11 (Units 1 & 2)	Year 12 (Units 3 & 4)
English	English, English Literature	English, English Literature
Mathematics	Foundation Mathematics; General Mathematics; Mathematical Methods; Specialist Mathematics	Mathematical Methods; Specialist Mathematics; Further Mathematics
Science	Biology; Chemistry; Physics; Psychology	Biology; Chemistry; Physics; Psychology
Arts	Visual Communication & Design; Music Performance; Media; Studio Arts; Certificate III in Music; Certificate III in Technical Production	Visual Communication & Design; Music Performance; Media; Studio Arts; Certificate III in Music; Certificate III in Technical Production
Languages	Indonesian; Italian	Indonesian; Italian
Health & Physical Education	Health & Human Development; Outdoor & Environmental Studies; Physical Education	Health & Human Development; Outdoor & Environmental Studies; Physical Education
Humanities	Accounting; Business Management; Geography; History; Industry & Enterprise; Legal Studies	Accounting; Business Management; Geography; History; Industry & Enterprise; Legal Studies
Technology	Systems Engineering; Product Design & Technology (Wood/Metal); Food Studies, Computing	Systems Engineering; Product Design & Technology (Wood/Metal); Food Studies, Informatics, Software Development

### VCAL

Key Learning Areas	Year 11 (Intermediate)	Year 12 (Senior)
Literacy	Credits awarded towards certificate from Literacy strand	
Mathematics	Credits awarded towards certificate from Numeracy strand	
Personal Development Skills	Credits awarded towards certificate from Personal Development strand	
Work Related Skills	Credits awarded towards certificate from Work Related Skills Strand	
Industry Specific Skills	Credits awarded towards certificate from Industry Specific strand	
VET - TAFE Course Certificate II or above	Most VET subjects are a 2 year commitment to attain the Certificate II or Certificate III level	
Structured Work Placement	40 days placement each year in industry relevant to VET subject.	

## Vocational Education & Training (VET) in Schools

All VCE and VCAL students will be counselled as to their desired career path.

VET subjects allow students to undertake specific vocational training as part of their VCE or VCAL program. VET subjects are nationally recognised and most courses provide credit toward the VCE.

VCE students who choose VET Programs must choose a VET subject that gives them credit towards their VCE. If a VET subject is chosen, this counts as one (1) subject selection for your VCE Program.

VCAL students **must complete** a VET subject as part of their VCAL program. Their structured work placement will also be directly related to this study area.

# Extra-Curricular Programs

*Across all year levels, an extensive extra-curricular program is offered with activities of a widely varied nature.*

## Sports

Sport is an important part of life at Lowanna College. There are numerous opportunities for students to become involved in sport including:

- House based Swimming and Athletics Carnivals cater for all students who wish to participate in school sporting competitions. Lowanna College has four competing Houses: Red Devils, Yellow Eagles, Blue Sharks and Green Crocs. Each House has elected House Captains from the each Mini School. Students are allocated a house on enrolment and siblings are usually allocated to the same house.
- Inter school Carnivals cover the traditional areas of Swimming, Cross Country and Athletics.
- Lowanna College also participates in selected inter school sporting competitions including: Soccer, Football, Volleyball, Basketball, Squash, Table Tennis, Cricket, Baseball, Netball, Tennis, Softball, Badminton and Hockey. All students are encouraged to sign up for these teams.

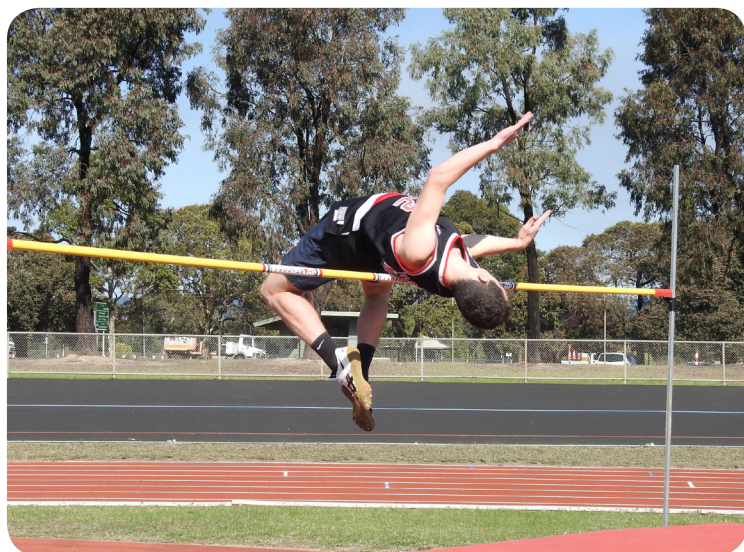
## Student Participation and Leadership

The College provides many opportunities for student activity, involvement and leadership.

School Captains are elected from the Year 12 cohort to represent the College community, and Mini-school Captains are also elected from the Middle and Junior Schools. The Captains have an active role in running the College's regular whole school assemblies where information is shared across the school, and awards and student achievement is recognised.

Lowanna College also has an active Student Representative Council (SRC) comprising students from all year levels who are elected by their peers. The SRC meet regularly to discuss student issues and to fund-raise in support of external charities and the College itself.

Lowanna House groups are also led by House Captains from each mini school.





## School Camps

Year 7 students have the opportunity to attend a camp at the beginning of the year. This camp enables students to get to know their teachers and each other in a different environment. Costs are kept to a minimum and the school encourages as many students as possible to attend.

Year 8 students have the opportunity to go on a camp within Victoria and Middle School students are offered an interstate trip.

The annual Snow Camp is a great opportunity for students interested in skiing or snowboarding. The camp is open to students from all year levels and visits either Mt Hotham or Falls Creek in August.



## International Program/Sister School visits to China

The College has a sister school relationship with Taizhou Middle School No.2 in China. This provides students with the opportunity to access intensive language and cultural experiences by participating in a delegation to our sister school.

The Language Department also organise a cultural trip to Italy every second year.





## Musical Production

Lowanna is well-known for its tradition of musical productions. The Musical is an extra-curricular activity, open to students from all levels. It brings together a wide range of school community members (parents, students and staff). There are opportunities for those students interested in performance and also those who want to help behind the scenes in costume, set design, makeup, ticketing and ushering. Many find these performances to be the highlight of their school career.



## Debutante Balls

The College hosts a Debutante Ball each year to cater for the high volume of students wishing to participate. The Debutante Balls are currently held in September and at least one student of each couple must be a Year 10 student at Lowanna College.





# Curriculum Support & Enrichment Programs

## Literacy

Differentiated learning from Years 7 - 12  
Learning support offered for all year levels  
Writing Competitions  
Literacy Aid and Tutorial Support  
Transition program (Years 5 to 7)  
Homework Club  
Premiers' Reading Challenge

## Cultural and Artistic

Visiting drama performances and theatre companies  
Instrumental music and musical performance  
Bands and ensembles  
College Musical production  
Art displays  
Almost Archibald Portrait Competition  
Biennial Italy Study Tour  
Dante Alighieri Poetry Competition  
Sister School student exchanges

## Leadership & Decision Making

Senior School Captains  
Mini School Captains  
Student Representative Council (SRC)  
House Captains  
Motivational presentations  
Leadership courses and conferences

## Numeracy

Differentiated learning from Years 7 - 12  
Numeracy Support classes at Year 7 and 8  
Westpac Maths Tournament/Maths Challenge  
Small tutorial classes at Year 9 and 10

## Careers and Work Experience

Careers Counselling  
Work Experience program (Yr 10)  
Course selection evenings  
Managing Individual Pathways (MIPs) and Student Tracking  
Work Placement

## Social Service

Ongoing fund-raising for charities and student facilities

## Sporting, Leisure & Social Activities

Inter school sports - basketball, soccer, netball, baseball, badminton, softball, cricket, tennis, hockey, athletics, swimming, squash, cross-country  
Debutante Ball  
Formals and Graduation Ball  
Camps program  
Lunchtime activities and competitions

## Educational Enhancement

Range of excursions  
Maths & Science Competitions  
Writers' awards & essay competitions  
Study Skills workshops  
Links with TAFE  
Debating Competition  
Extension Studies

## Pastoral Care and Counselling

Student Counsellors  
College Chaplain  
Program support for students with special needs  
Mini-school Co-ordination Teams (Junior, Middle and Senior)  
Pastoral Teachers (Year 7)  
Adolescent Health Nurse  
First Aid Officer  
Kid's Help Line  
Breakfast Club







# respect.

## respect yourself

*take care of yourself*, don't be reckless  
make *healthy choices* for your mind & body  
always be *honest* especially with yourself  
adopt a *positive attitude*  
*be yourself* everyone else is already taken

## respect others

use *appropriate language*  
use words like *please & thank you*  
use your *calm voice* when talking  
use *commonsense* always

## respect lowanna

be *prepared* for every lesson  
be *on time* for class  
be *cooperative* with staff  
be *considerate* to classmates  
be *kind* to others