

Our Vision

The Lowanna College community is committed to high expectations and believes all students will achieve excellence in their endeavours.

Principal's Welcome

Welcome to the Lowanna College community.

At Lowanna College, we are passionate about providing the best educational opportunities for our students. As you see in our vision above, we have a culture of high expectations that ensures our students achieve the best possible outcomes, whilst in a safe and supportive environment.

Lowanna College is a Year 7-12 secondary school, with a student population of approximately one thousand. We have a strong focus on teaching and learning in every classroom, with teaching practice guided by our college-wide instructional model. Our teachers work in teams to collaboratively plan learning, based on student needs, and together reflect on the impact of their teaching using regular evidence and data.

We have a strong focus on relationships between staff and students, and our students themselves. All students are connected with a Home Group teacher, who meets with them each morning, and provides a pastoral-care role. We also provide a suite of student support services, including access to Student Support Officers and an extensive Wellbeing Team.

Student voice is key part of our college. Our students, and their represented student leaders, play a key role in policy decisions, activities and events. Through a systematic process, our students also provide feedback to their teachers on a regular basis, to help us continually improve learning.

We are incredibly proud of our growth and achievements over the past four years. Personally, it has been a privilege to lead the college over this time, and a collective effort from our whole community to achieve our record growth in literacy and numeracy, VCE outcomes, and our continuing enrolment growth.

If you are considering enrolment at our college, I encourage you to visit our campus, tour the school in operation, and make your own informed decision based on what you see and experience.

If you are a student/family and have already made the decision to attend our college, I take great pleasure in welcoming you to Lowanna College. I look forward to our ongoing engagement, and supporting you over the coming years, and know that your child will receive an excellent education.

Adam Hogan
College Principal



Table of Contents

Curriculum	2	Curriculum Programs	10
Communication	3	Junior School Program	10
Newsletter	3	Middle School Program	11
Compass School Manager	3	VCE & VCE -VM	12
Student Support	4	VET in Schools	12
Facilities	6	Extra-curricular Programs	13
College Uniform	8	Curriculum Support & Enrichment Programs	16
Lowanna Sports Academy	9		

Curriculum

The College, in cooperation with local primary schools, tests the Literacy and Numeracy skills of incoming students. These tests are used to identify students with learning difficulties and also high achievers. Programs have been designed to provide for students at both ends of the learning spectrum as well as those achieving as expected.

Lowanna College places a great deal of emphasis on catering for students of all ability levels. The structure of the timetable, the subjects offered and the wide range of extra-curricular activities provide students with a stimulating and enriching experience at the College.

Along with the core subject areas, a wide range of quality options are offered that set the College apart from other schools in the area.

At Years 7 & 8 each Learning Area is a compulsory part of the curriculum.

The study of Languages is compulsory at Year 7 and is offered as an elective from Year 8 to Year 12.

At Years 9 & 10 all Learning Areas continue to be compulsory but within a unit structure where broad student choice is provided. The curriculum is divided into a set number of units to be completed over two years. Each Learning Area is represented in this system.

At Years 11 & 12 students are able to complete the Victorian Certificate of Education (VCE) or the VCE - VM (Vocational Major). Students can choose from a comprehensive range of subjects and are also able to select from a number of Vocational Education & Training (VET) certificates. The College has close links with several TAFE Colleges and ongoing agreements with Monash and Federation University.

Students are mentored in the development of their own individual pathway preparation for post-secondary education.

Year 7 classes allow for a variety of learning experiences using and sharing information and resources. This provides easy access to student support services and presents opportunities to participate in a variety of activities.

Year 7 and 8 classes provide students with the opportunity to vary their learning experiences.

Specialist programs in Music, the Arts, Science, Physical Education, Technology and Food are all key components of the learning program that students look forward to when they come to secondary school.

Lowanna College has a close working relationship with local government primary schools and holds regular network meetings to discuss issues involving curriculum and transition of students from Grade 6 to Year 7.

We are proud of our comprehensive transition program for Grade 6 students and look forward to building on this success to provide a consistent, quality education for all students both now and into the future.



Communication

Newsletter

Lowanna News is published electronically and is produced to keep students and parents informed of all events taking place within the College. Current and back issues of the newsletter can be found on the College website: www.lowanna.vic.edu.au.

Facebook/Instagram

To complement our other communication avenues, the College has an official Facebook and Instagram page where you will find the latest posts, photographs and links to college news.



Attendance

It is important that students are fully engaged in their educational pursuits, therefore attendance is a high priority.

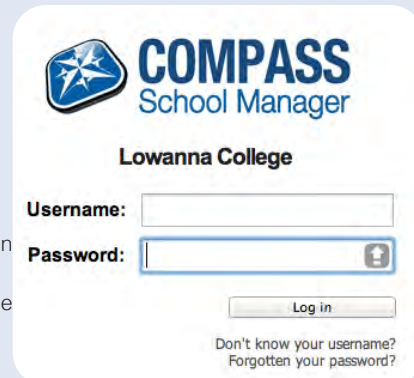
Each mini school has an Administrative Assistant who manages attendance records and informs the coordination team of any attendance issues. Parents have access to their child's academic and attendance records online via the Compass Parent Portal. Coordinators are available to discuss a student's attendance at the parent's request.

Parents will be notified via an automated SMS if their child is absent without permission.

Parents are clearly notified via the website, Compass, Facebook page and newsletters of any Student Free Days. Students are required at school on all other occasions. When an absence does occur parents are required to notify the school either during or immediately after the absence.

Compass

At Lowanna College, we recognise that parents are busy and often don't have the time to come in to the school during the day. We have chosen to adopt the most efficient form of communication between school and home by introducing a community online portal called 'Compass'.



Compass has become the primary means of communication between the school and home.

We do however, understand that not all parents have access to the technology required to make use of the Parent Portal. We therefore encourage any family in this position to make alternative arrangements to acquire hard copies of reports and news bulletins.

Parents can login to Compass via the 'Community Portal' button located on the school website (www.lowanna.vic.edu.au) or via this URL address <http://lowanna.vic.jdlf.com.au>

Each family listed in the school administration database has a unique login for Compass, which you will receive upon enrolment and can use immediately.

The features of Compass are detailed below:

- 1. Email address and mobile phone number** - update your details through the portal. The details listed will be used to send emails and SMS alerts.
- 2. Electronic News feed** - the school will post (electronically) news to parents to inform of upcoming events and activities at the school. Your news feed will be customised, showing only the information relevant to you and your children.
- 3. Attendance** - view your child's attendance online, approve absences, and indicate a future absence.
- 4. Reports** - GPAs and end of semester reports are available on Compass for you to view, download and/or print. The College no longer prints school reports, however a printed copy can be made available upon request.
- 5. Lowanna Newsletter** - The College Newsletter is available to families on Compass twice per term, as well as being updated on the Lowanna College Website and Facebook Page.
- 6. Teacher email** - parents can email their child's teachers directly.
- 7. Parent Payments** - pay for school fees or excursions electronically. Compass provides the school community with a range of facilities, which streamlines communication and enables enhanced access to information.

It is important that parents log in at least once a fortnight to access the news bulletin and the news feed. It is essential that the Username and Password is kept in a safe place, and not made available to students.

If you require assistance using Compass please contact the College where a staff member will be happy to help you.

Student Support

The College places a high priority on student wellbeing. Alternative programs, using community resources, operate at Year 7 & 8 to assist students at educational risk.

Growth Mindset

Lowanna College is committed to high expectations, including the establishment of a culture of Growth Mindsets. We believe that all students are able to learn and reach their full potential. Staff are trained in the language of mindset, they encourage students to continually apply themselves through effort and persistence in order to understand feedback as an opportunity to learn and develop skills. At Lowanna College we are trained to recognise the fixed mindsets of students and challenge those who do not believe in themselves.

Student Management & Wellbeing

Student Management at Lowanna College centres on each student's mini school. There are three mini schools:

- Junior - Years 7 & 8
- Middle - Years 9 & 10
- Senior - Years 11 & 12

The mini schools are led by a Mini School Leader, Coordinator/s and Student Support Officer/s, who have the responsibility for the management and wellbeing of the students.

Communication between school and home is vital to student success and wellbeing. The College can only act on a concern if we are made aware of it. Please contact the relevant mini school with any issues regarding your child's progress, discipline, health and welfare. Each mini school has an Administration Assistant who will assist in organising these contacts.

Adolescent Health

The Secondary School Nursing Program (SSNP) aims to reduce risk to young people and promote better health in the wider community.

The goals of the SSNP are to:

- play a key role in reducing negative health outcomes and risk taking behaviours among young people, including drug and alcohol abuse, tobacco smoking, eating disorders, obesity, depression, suicide and injuries
- focus on prevention of ill health and problem behaviours by ensuring coordination between the school and community based health and support services
- support the school community in addressing contemporary health and social issues facing young people and their families
- provide appropriate primary health care through professional clinical nursing, including assessment, care, referral and support
- establish collaborative working relationships between primary and secondary school nurses to assist young people in their transition to secondary school.

As part of this state-wide program the College accesses the services of a part-time, qualified nurse who provides health education for the school community. The school nurse is an integral member of the college welfare team.

First Aid

The College has a trained First Aid Officer and many first aid trained staff to deal with ill or injured students and dispense prescribed medications.

The College has policies and procedures in place in the event of student illness or injury. These may include first aid provided by the First Aid Officer, contact to parents, or other emergency contacts and, if necessary, calling an ambulance.

Koori Education Centre

We have a full program of support for our Indigenous students and their families. A Koori educator works with these students to assist with their attendance at school. We also offer Koori tutoring for our students as a means of supporting their success. The College provides a Woolartbe room to students of Indigenous heritage where they are able to access resources for their schooling.

Student Wellbeing

Lowanna College has identified student wellbeing and management as a major priority.

The College employs a Wellbeing Team Leader, Wellbeing Coordinators, a Chaplain, a Student Nurse, a Koorie Support Officer and a psychologist who provide confidential counselling and support service to all students and parents.

The Student Wellbeing Team are responsible for helping students manage issues such as truancy, disengagement, bullying, drug use and mental health. The Student Wellbeing Team are located in the main building opposite the library. They offer a space for many students requiring additional support.

The Wellbeing Team work alongside external wellbeing and mental health professionals and agencies. These professionals offer opportunities for one on one and group work to address social/emotional needs. This College is committed to creating a strong holistic and therapeutic approach in supporting students.

Lowanna College is a Respectful Relationships Lead School. This means the school is addressing the issue of Family Violence, by offering teaching and learning opportunities and has a Whole School Approach to address gender inequality as a driver of Family Violence, and the impact this has on our community. The College also engages in other initiatives and programs supporting the prevention of violence to create a culture of respect across the school community.

The College also has access to District Support Staff of the Department of Education. When a need is identified, such as truancy, the College engages the expertise of regional staff to help identify and address concerns.

Educational Support

Lowanna College strives to provide an inclusive, educational opportunity for all students. The hub of special programs is located at the 'Language Centre', which provides both small group working spaces as well as larger class areas for these students. The Program for Students with Disabilities (PSD) is based here with access to aide time, special education consultation and planning. Students always feel welcome and comfortable knowing that support and understanding is available to help them manage in such a large school. Parents can easily contact the Centre by phone to speak to the coordinator regarding any of the following -

- Programs for Students with Disability (PSD/integration) support and staff.
- Special needs resources.
- Literacy Support programs for students with language disorders or literacy difficulties.
- Access to computers.
- Support groups.
- Educational testing and screening for groups or individuals.
- Time-out support for student behavioural management.
- Individually programmed sessions for students with Individual Learning Plans.
- Access to consultation with District Staff psychologist, speech pathologist and special education services.
- Effective linking with the school welfare structure, including counselling.
- Direct access to Special Education teacher at parent request.
- A safe, structured environment to assist in strengthening students' sense of belonging.

Other programs such as Literacy Support, English as an Additional Language and specialised group work are located in the Language Centre.

My Careers

The major focus on career education within the Department of Education and Training ensures that Lowanna College students become skilled and capable in navigating multiple career options and choices to meet the challenges of the rapidly changing world of post study, employment and life beyond school. We are committed to ensuring every student has access to high quality career education.

Career education begins in Year 7 and is embedded into the students' school program through to the end of Year 12. During this time, students will acquire the skills for their career development through each year level at Lowanna College. Career education involves a wide range of activities, programs, events, and career action plans.

The careers curriculum framework helps develop a high-quality careers development program:

Year 7 – I discover – Using a range of activities to discover their strengths, interests and investigate the world of work. This will pave the way for optimistic career pathway planning.

Year 8 – I explore – Exploring the influence that a positive self-image and good learning habits have on occupational choice.

Year 9 – I focus - Focussing on the contribution that personal attributes and effective communication skills make to their future life and work roles

Year 10 – I plan - Planning their pathway to achieve broad career goals

that offer a range of options. Students use their increased self-knowledge and deeper understanding of education and training requirements to inform these decisions.

Year 11 – I decide - Confirming and managing their career action plan. They need to ensure that it reflects their current personal profile, including skills, abilities, attitudes, and academic performance. They explore and consolidate their knowledge for their future career planning.

Year 12 – I apply – Applying their learning to critically examine their career goals and have sound knowledge of the requirements for their planned further education, training, or employment choices.

Lowanna College provides additional tailored career programs to support students with disabilities, indigenous students, students in out-of-home care, and students at risk of disengagement.

We have two qualified Career Practitioners in our careers team who are passionate about helping our students achieve their career goals.

Conveyance Allowance

Students who live more than 4.8km from the College and who are unable to access free school buses may be eligible for a conveyance allowance. A bus coordinator is available at the College to discuss any issues that might arise.

Responsibilities of Students

At Lowanna, students are encouraged to pursue excellence within a caring environment by:

- Demonstrating a consistent commitment to improving skills and knowledge.
- Accepting responsibility for their actions and developing self-discipline.
- Treating others with respect and good manners.
- Treating personal property and the property of others with respect.
- Respecting the right of others to learn and the right of teachers to teach, with the understanding that all students should have access to interesting, enjoyable and successful educational experiences.

School Injuries & Insurance

The Department does not provide personal accident insurance or ambulance cover for students. Parents and guardians of students, who do not have student accident insurance/ambulance cover, are responsible for paying the cost of medical treatment for injured students, including the cost of ambulance attendance/transport and any other transport costs.

It is recommended that parents/guardians wanting their child to be insured should seek assistance in obtaining student accident insurance with their insurance broker or search for a suitable personal accident insurer.

Personal property is often brought to school by students, staff and visitors. This can include electronic devices, calculators, toys, sporting equipment and cars parked on school premises. The Department does not hold insurance for personal property brought to school and has no capacity to pay for any loss or damage to such property. Staff, students and visitors are discouraged from bringing any unnecessary or particularly valuable items to school.

Facilities

Language Centre

Lowanna College has a state of the art Language Centre. This centre accommodates the Language department as well as the English as an Additional Language (EAL) program.

Library Resource Centre

The Lowanna library holds a wide range of learning resources which includes multi-media as well as books. Automated search terminals and a loan system allow students and staff fast and easy access to resources. There are two class areas available as well as study resources, there is an extensive fiction and magazine collection to cater for recreational readers and many board games to encourage social interaction between students. The Library is open before, during and after school and at both recess and lunchtime to allow staff and students ample opportunity to use and borrow resources.

The Library also hosts the 'Homework Club' every Monday from 3.00pm - 4.30pm which is staffed by a group of volunteer teachers. It is a great opportunity for students to form study groups and receive extra assistance outside normal scheduled classes.

Careers Resource Centre

Located within the Library Resource Centre, the Careers Resource Centre provides comprehensive resources and services for our students to assist with their post school preparation. Some of the services offered include: course and career guidance, pathways planning, job interview preparation and work experience/work placement. For senior students there is a vast array of information on University and TAFE courses, scholarships and student services.

The center is open throughout the day and most recess and lunch times.

Students are encouraged to participate in the many career related excursions and events that are organised throughout the year.

Canteen

The College hosts a canteen which provides a wide range of hot and cold food. This operates at recess and lunchtime.

Lockers

All students are provided with a locker for their personal use as well as a combination lock to keep their belongings secure.

Information and Communication Technologies

Lowanna College places high priority on Information Technology and the use of Learning Technologies in all Learning Areas. The College's enhanced network and Laptop Program supports the ways in which the school communicates, collaborates, co-operates, and creates.

Our laptop program enables improved access to learning technologies, online learning and a collaborative learning environment, specifically through the use of Microsoft Office products. We believe that giving students access to technology via the laptop program will help engage them in the learning process in new and creative ways. This is an exciting opportunity for our students to become increasingly skilled at using technology to access and present information, to problem solve and to work collaboratively.

Gymnasium & Auditorium

A 580 seat auditorium supports a strong Performing Arts program.

A double gymnasium with sprung floor enhances the Physical Education and Sports program.

These facilities not only benefit Lowanna students but are available for hire to the wider community.

Fitness Gym

The College has a fully equipped gym with a range of cardio equipment, machine weights and free weights.

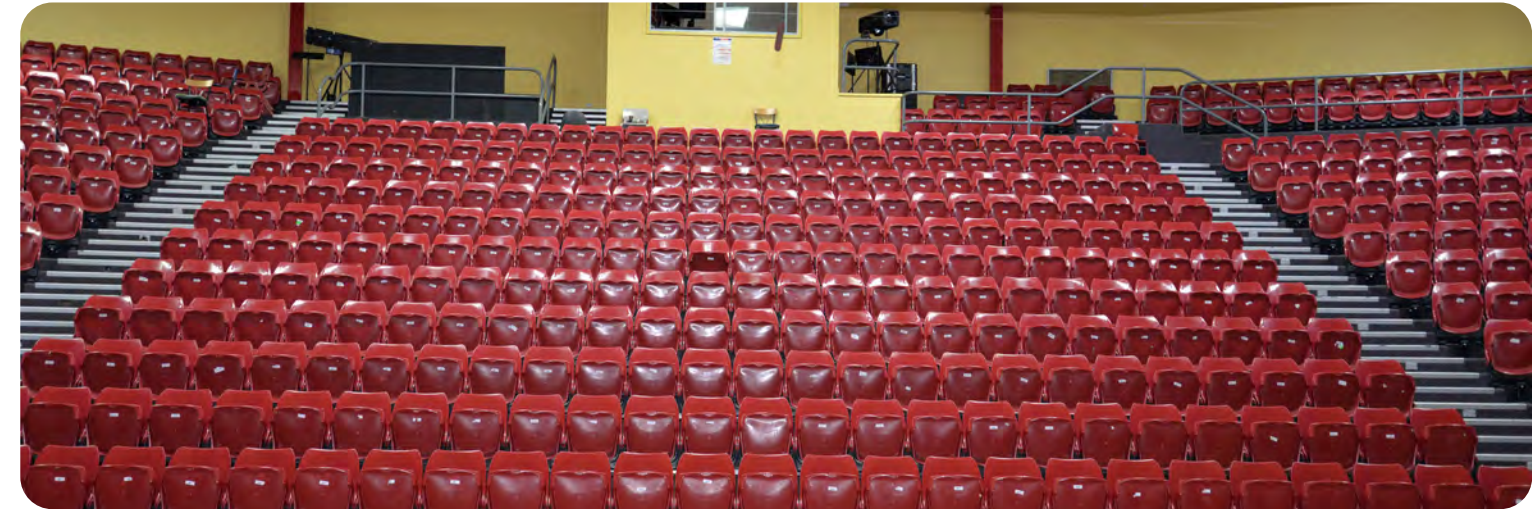
Gym programs are incorporated into the curriculum and are also offered at lunchtimes and after school for students.

Outdoor Sporting Facilities

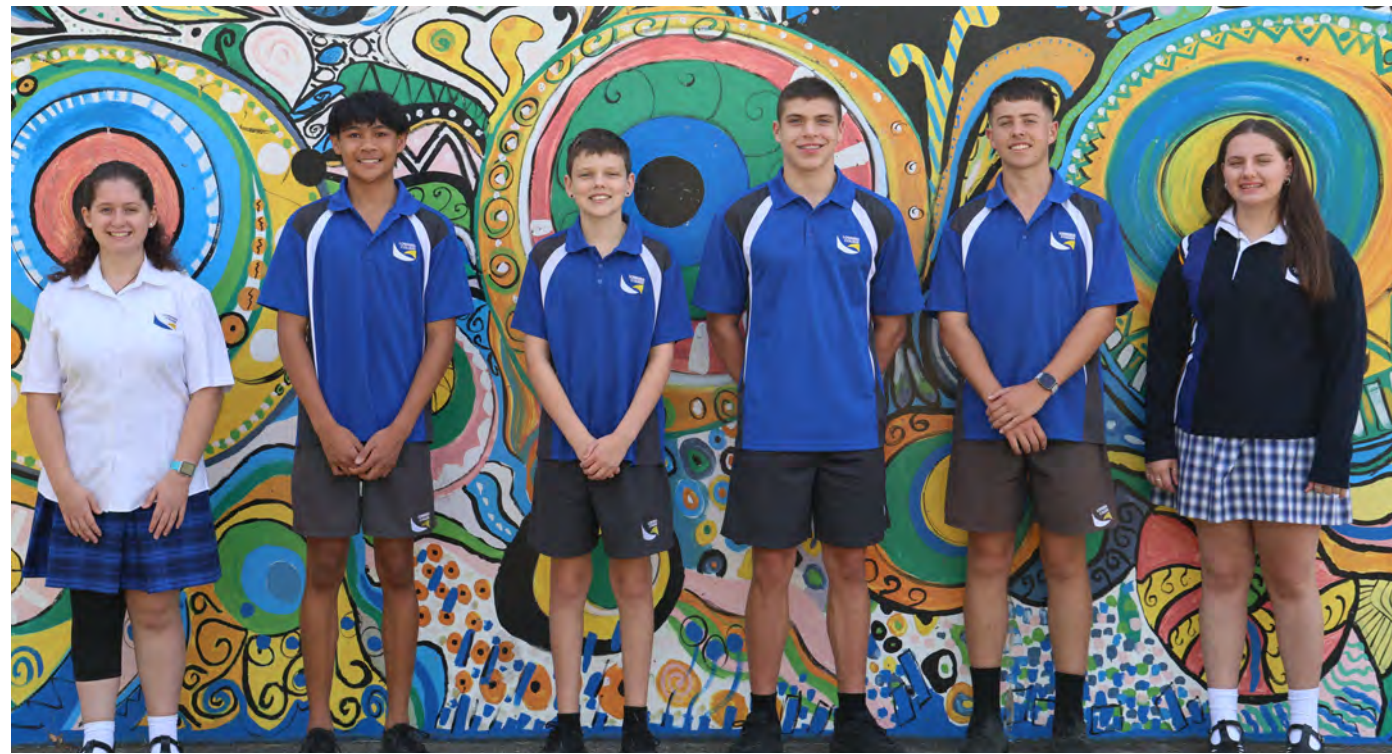
The College has a football oval, soccer pitch, basketball, and netball courts all on-site. Additionally, Lowanna is located within close proximity to the Latrobe Leisure Centre and Newborough Recreation Reserve where facilities include a heated indoor swimming pool, and track and field facilities.

Horticultural Area and Mini Farm

A mini farm incorporating a horticultural area, calf pens and chicken runs has been established within the College grounds.



College Uniform



The wearing of school uniform develops pride, a sense of belonging and identification. The Lowanna College Council has adopted a compulsory student dress code within Department of Education guidelines. The original uniform was designed by a group of parents and students when the College was formed. Variations have been introduced since then, the most recent being our puffer jacket and the very popular student led Rugby style jumper. The guiding principles were practicality, availability, affordability and choice with a clear College identity. The uniform policy is reviewed and ratified by College Council on a regular basis.



Our college uniform is available from Beleza School Uniforms in Moe and Warragul:

Beleza Moe Store 26B George Street
Beleza Warragul Store Shop 6 William Square

All students are required to be in full school uniform at all times, including travelling to and from school, and excursions. Students will be made aware of exceptions such as Sport/PE, out of uniform days and other occasional activities.

Lowanna College offers a Uniform Exchange Program. This program allows students to exchange non-uniform items for brand new uniform items, as well as supporting families to purchase new items if needed.

Non compliance with the uniform policy will be treated as a breach of the College Code of Conduct and penalties will apply including detentions and exclusion from social events and other extra-curricular activities.

All clothing should be clearly marked with the owner's name. There is a lost property cupboard located in the First Aid area for items that may have been misplaced.

A list of the current uniform items will be provided with the enrolment package, or you can check the college website to view our Uniform Policy. All items can be purchased online by visiting <https://beleza.com.au/online-store/>.

Secondhand uniform items are also available online via the Lowanna College Secondhand Books, Equipment and Uniform Facebook group. When purchasing secondhand uniform items please ensure they are part of the current college uniform - refer to our Uniform Policy on the college website for more information.

Lowanna Sports Academy



The Lowanna Sports Academy is committed to providing students with the highest quality specialised sports program including high quality coaching, excellent facilities and equipment. As the only government school-based sporting and academic development program in Gippsland, we are offering students elite coaching and training during school hours while delivering a complete secondary school curriculum. The program is offered from Year 7 to 12.

Lowanna has partnerships with Gippsland Power (AFL), Gippsland United (Basketball), Voyage Fitness, Standout Nutrition & Health, Physioworks, Nike PTS and Mindfull Aus which ensures a quality program is delivered and provides additional resources for the program. These partnerships complement our program whilst improving sporting pathways for talented student athletes.

The current curriculum includes;

- AFL girls, AFL, Soccer, Basketball, Netball and individual sports
- Visiting an AFL/NBL/soccer/Suncorp Super Netball club
- Special guest training sessions
- Recovery session
- Completing an AFL umpire, soccer coaching or referee course (Yr 9)
- Units 1 & 2 VET Sport & Recreation (Yr 10)
- Units 3 & 4 VET Sport & Recreation (Yr 11)
- Guest speakers: dieticians, sports psychologists, high profile athletes
- Fitness and conditioning sessions
- Participating in all SSV sporting competitions, the Helloworld National Schools Basketball Championships and Herald Sun Shield (AFL).

To continue to participate in the Sports Academy, students are expected to maintain a Grade Point Average (GPA) of 2.5 and high academic results.

Please be advised that there is a cost associated for students to be part of the program. Please contact the college for more information.



Curriculum Programs

Junior School Program

The Junior School program is based on a solid core of Literacy and Numeracy. A diverse range of specialist subjects that only a well resourced school such as Lowanna can provide complements this core. These specialist subjects present students with the opportunity to select a range of experiences to broaden their awareness and help them to make better informed choices for future pathways. The timetable is organised into 25 sessions per week, each of 57 minutes duration.

Year 7

Key Learning Areas & Subjects

Arts: Visual & Music
English
Health & Physical Education or Sports Academy
Mathematics
Science
Technology: Food Studies, Digital Technologies & Materials Technology
Humanities
Languages: Italian or Indonesian

Year 8

Key Learning Areas & Subjects

English
Health & Physical Education or Sports Academy
Mathematics
Science
Humanities
Electives: Italian, Indonesian, Digital Technologies, Sports Academy, Music Excellence Program, Music, Art, Food Studies, Technology

Please be advised that elective classes are subject to change.



Middle School Program

Middle School not only offers a change of location for students, but the program offered reflects that students are now older and are ready to explore new options. Year 9 & 10 students are moving towards a time where they are beginning to plan for their future. The level of work is increased, and students need to accept that homework and study at home will increase, to enable them to keep up with the work requirements for each subject. At Year 10, students can apply to undertake a VCE subject, whilst all students complete a unit of Work Education.

In the Middle School, there are some compulsory areas of study, but a broader choice is available. Essentially, students are still undertaking a general education. Students will be in classes which include other students who have selected that particular unit of study. Students study 6 units each semester and each class will be made up of different students according to subject selection.

Year 9 Program

Key Learning Areas	Compulsory Subject	Elective Subject
English	English	
Mathematics	Mathematics	
Science	General Science	Forensic Science; Introduction to Psychology; Agricultural Science
Humanities	Humanities (History/Geography/Civics & Economics)	Despots, Dictators & Democracy; History through Film; The Environment Under threat; Australian History
Health & Physical Education	Physical Education & Health (single sex)	Outdoor and Environmental Recreation; Sports Academy; Fun and Fitness
Visual & Performing Arts	One of: Painting & Drawing; Photography; Ceramics; Visual Communication & Design; Music Performance & Composition; Music Excellence	
Technology	One of: Food Studies, Food & Health, Electronics; Wood Technology; Metal Technology; Systems; Automotive Technology	
Languages		Italian; Indonesian

Year 10 Program

Key Learning Areas	Compulsory Subject	Elective Subject
English	English	
Mathematics	Mathematics	
Science	General Science	Agricultural Science; Serious About Science
Humanities	General Humanities (including Work Experience)	Small Business Accounting & Management, Introduction to the Law; Despots, Dictators & Democracy; Australian History
Health & Physical Education	Physical Education & Health (single sex)	Fun & Fitness; Outdoor and Environmental Recreation; Sports Academy
Visual & Performing Arts	Choice of: Digital Photography; Ceramics; Visual Design; Music Performance & Composition; Art Creative Practice; Music Excellence	
Technology	Choice of: Food Studies, Food Safari; Cafe Culture; Systems; Metal Technology; Wood Technology; Coding & Gaming; Furniture Making; Advanced Furniture Making; Computer Programming	
Languages		Italian; Indonesian

Please be advised that elective classes are subject to change.

Extra-Curricular Programs

Senior School Program

VCE

An extensive range of studies is offered at the VCE and VCE-VM level. Units 1, 2, 3 & 4 are timetabled for 4 sessions per week.

Key Learning Areas	Subjects
English	English, English Literature
Mathematics	General Mathematics; Mathematical Methods; Specialist Mathematics
Science	Biology; Chemistry; Physics; Psychology
Arts	Music Performance; Art Creative Practice; Certificate III in Music; Certificate III in Technical Production
Languages	Indonesian; Italian
Health & Physical Education	Health & Human Development; Outdoor & Environmental Studies; Physical Education; Certificate III in Sport & Recreation
Humanities	Business Management; Geography; History; Legal Studies
Technology	Systems Engineering; Product Design & Technology (Wood/Metal); Food Studies, Computing

VCE VM (Vocational Major)

The VCE VM pathway is a 2-year vocational and applied learning program. It replaces Senior and Intermediate VCAL.

Key Learning Areas	Unit Requirements
Literacy	3 VCE VM Literacy or VCE English units (including a Unit 3-4 sequence)
Mathematics	4 VCE VM Numeracy or VCE Mathematics units
Personal Development Skills	4 VCE VM Personal Development Skills units
Work Related Skills	4 VCE VM Work Related Skills units
VET - TAFE Course Certificate II or above	Certificate II level or above (equivalent to 180 hours)
Structured Work Placement	Students apply knowledge and skills in practical settings within the workplace

Vocational Education & Training (VET) in Schools

All VCE and VCE VM students will be counselled according to their desired career path.

VET subjects allow students to undertake specific vocational training as part of their VCE or VCE VM program. VET subjects are nationally recognised and most courses provide credit towards both VCE and VCE VM pathways.

VCE students who choose VET Programs must choose a VET subject that gives them credit towards their VCE. If a VET subject is chosen, this counts as one (1) subject selection for your VCE Program.

Advance to University (ATU)

Advance to University is an extension program for high achieving students who are looking for a challenge by undertaking first-year university units as part of their VCE. This is offered in partnership with Federation University. Students must meet the pre requirements set by Lowanna College and the necessary prerequisites set by Federation University. Students who successfully pass are guaranteed a place at Federation University.

Across all year levels, an extensive extra-curricular program is offered with activities of a varied nature.

Sport

Sport is an important part of life at Lowanna College. There are numerous opportunities for students to become involved in sport, including:

- House based Swimming and Athletics Carnivals cater for all students who wish to participate in school sporting competitions. Lowanna College has four competing Houses: Red Devils, Yellow Eagles, Blue Sharks and Green Crocs. Each House has elected Captains from each Mini School. Students are allocated a House on enrolment and siblings are usually allocated to the same House.
- Interschool Carnivals cover the traditional areas of Swimming, Cross Country and Athletics.
- Lowanna College also participates in selected inter school sporting competitions including: Soccer, Football, Volleyball, Basketball, Squash, Table Tennis, Cricket, Baseball, Netball, Tennis, Softball, Badminton and Hockey. Students are encouraged to sign up for these teams.
- Lunchtime house sporting competitions.

Student Participation and Leadership

The College provides many opportunities for student activity, involvement and leadership.

School Captains are elected from the Year 12 cohort to represent the College community. Mini-school Captains are also elected from the Middle and Junior Schools. The Captains have an active role in running the College's regular whole school assemblies where information is shared across the school, and awards/student achievements are recognised.

Lowanna College also has an active Student Representative Council (SRC) comprising students from all year levels who are elected by their peers. The SRC meets regularly to discuss student issues and to fundraise in support of external charities and the College itself.



School Camps

Year 7 students have the opportunity to attend a camp at the beginning of the school year. This camp enables students to get to know their teachers and each other in a more informal environment. Costs are kept to a minimum and the school encourages as many students as possible to attend. Year 8 students have the opportunity to go on a camp and/or excursions throughout the school year and Middle School students are offered an interstate trip.

The annual Falls Creek Snow Camp (in August) is a great opportunity for students interested in skiing or snowboarding and is available to students from all year levels.



International Program/Sister School visits to China/Italian Tour

The College has a sister school relationship with Taizhou Middle School No.2 in China. This provides students with the opportunity to access intensive language and cultural experiences by participating in a delegation to our sister school.

The Language Department also organises a cultural trip to Italy every second year.



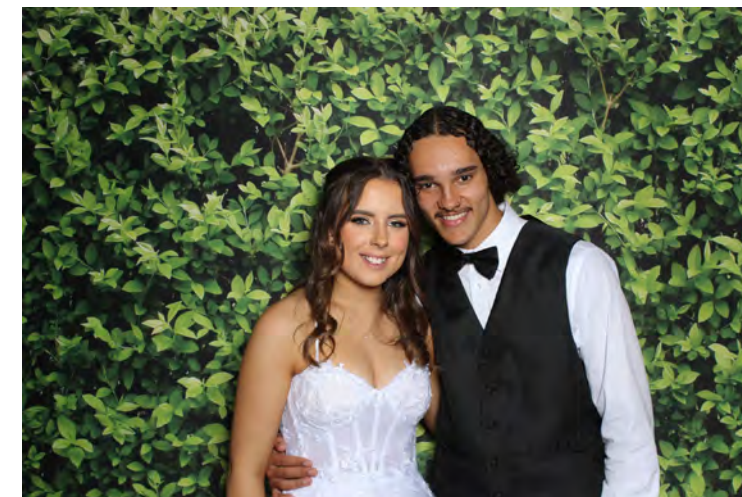
Musical Production

Lowanna is well known for its tradition of musical productions. The Musical is an extra-curricular activity, open to students from all year levels. The production brings together a wide range of school community members (parents, students and staff). There are opportunities for those students interested in performance and also those who wish to assist back stage in costume, set design, makeup, ticketing and ushering. Many find these performances to be the highlight of their school career.



Debutante Balls

The College hosts a Debutante Ball each year to cater for the high volume of students wishing to participate. The Debutante Ball is currently held in September and at least one student of each couple must be a Year 11 student at Lowanna College.



Curriculum Support & Enrichment Programs

Literacy

Differentiated learning from Years 7-12
 Literacy Enrichment Program for Years 7-10
 Literacy Tutors and support for
 VCE English and Literature subjects
 Transition program (Years 5-7)
 Homework Club
 Independent Reading program for Years 7-10
 Premiers' Reading Challenge
 Learning Specialist Teacher for Literacy

Cultural and Artistic

Visiting drama performances and
 theatre companies
 Instrumental music and musical performance
 Art Club
 Bands and ensembles
 College Musical production
 Art displays
 Almost Archibald Portrait Competition Dante
 Alighieri Poetry Competition International
 Travel (COVID Dependent)

Pastoral Care and Counselling

Mental Health Practitioner
 Student Counsellors
 College Chaplain
 Program support for students
 with special needs
 Student Support Officers
 (Junior, Middle and Senior)
 Home Groups
 Adolescent Health Nurse
 First Aid Officer
 Breakfast Club
 Re-engagement
 Green Tradies Program
 Boys/Girls Groups

Numeracy

Staff work in year level teams to create rich
 and diverse learning experiences
 Individualised programs that challenge and
 engage students
 Mathematics extension to every year level with
 small group tutoring and in class support
 After school maths tutoring for all students
 Re-engagement program for disengaged
 students

Sporting, Leisure & Social Activities

Inter school sports - basketball, soccer,
 netball, baseball, badminton, softball,
 cricket, tennis, hockey, athletics, swimming,
 squash, cross-country, volleyball
 Debutante Ball
 Senior Formal and Graduation Ball
 Camps program
 Lunchtime activities and competitions
 Canoeing and Mountain Bike Programs

Student Leadership & Decision Making

School Captains
 Mini School Captains
 Home Group Captains
 Student Representative Council (SRC) House
 Captains
 Motivational presentations
 Leadership courses and conferences

Educational Enhancement

Excursions
 Maths & Science Competitions
 Writers' awards & essay competitions
 Study Skills workshops
 Links with TAFE
 Extension Studies
 Advance to University

Careers and Work Experience

Careers Counselling
 Work Experience Program (Year 10)
 Course Counselling
 Career Action Plans
 Student Tracking
 Work Placement
 Guest Speakers
 Trade Training Pathways
 Gippsland Tech School
 Morrisby (Year 9)
 Years 7 & 8- My Career Exploration
 Year 9- My Career Insight
 Monash University Experience Days
 TAFE Sessions
 VCE Camp (Year 11)
 Advance to University
 Headstart Apprenticeship/Traineeship
 Opportunities
 Experience Days
 Baw Baw LLEN Program
 Industry Visits and Camps



This publication was correct at the time of printing and is subject to change. Updated as of June 2024.